



Contact us: Tel: 02 67521913 | Fax: 02 67524016 | Email: moree-p.admin@det.nsw.edu.au

## LAUNCHING – LEARNING DISPOSITIONS!



It is great to be back at school in the last term of 2021 for a year that has once again been impacted by COVID-19, causing changes to how we deliver education. The school has returned to continue the same restrictions in place in late Term 3. Unfortunately, parents are not permitted on school site unless they are picking up their child, enrolling their child or attending a meeting. In every case, all visitors must go immediately to the front Office, signing in using our QR code and wearing a face mask. We are in the process of implementing the Department of Education 'school visitor check-in' which starts on 18 October (please see information next).

Parents would also be aware that all staff on site, including contractors and Allied Health Providers must be fully vaccinated by 8 November. Moree Public School is committed to this goal to keep our students, staff members and community safe. Additional cleaning, personal hygiene protocols and face mask wearing are strictly followed at school. Thank you to our parents for keeping physically distant while waiting for your children outside the school gates in the afternoon.

**LEARNING DISPOSITION:** Term 4 adds an exciting element to our Visible Learning program. The Learning Disposition launch brings together much work behind the scenes that support every student to reach their potential as a learner. **Motivation** is one of the dispositions (and key) to being a great learner. Congratulations!

**SCHOOL VISITOR CHECK-IN:** A single School Visitor Check-in system for every school across the state is coming from 18 October! The Department of Education has partnered with Service NSW to provide a streamlined, digital school sign-in system for visitors and contractors at every NSW government school.

Benefits of the new system include:

Accelerating your check-ins to as fast as 20 seconds!

Linked to NSW Health's COVID-19 contact tracing ensuring every school is compliant with the NSW COVID-19 mandate.

*Who can use School Visitor check-in:*

- Visitors such as parents and carers, contractors, service providers and volunteers (students or visitors under the age of 18 are not required to use School Visitor Check-in).

For more information visit School Visitor Check-in on the department website

<https://policies.education.nsw.gov.au/public-schools/school-visitor-check-in>

**STUDENT ATTENDANCE:** Education for your child is important and regular attendance at school is essential for your child to achieve their educational best and increase their career and life options. Education in NSW is compulsory for all children from six years old and once enrolled, children are required to attend school each day it is open for students.

Our school is open with supervision from 8:30am with classes starting at 9:00am every day. Lateness is recorded as a partial absence and must be explained by parents. On occasion, your child may need to be absent from school. Justified reasons for student absences may include:

- being sick, or having an infectious disease
- having an unavoidable medical appointment
- being required to attend a recognised religious holiday

**Important Information** MPS website: [www.moree-p.schools.nsw.edu.au/](http://www.moree-p.schools.nsw.edu.au/) Facebook: [www.facebook.com/Moree Public School](https://www.facebook.com/MoreePublicSchool)

• 80 Reading Club – Daniel Moore-Spenser, Danilo Djulic, and Archie Hague.

Minuki Rathnayake will each receive a Principal Award for joining the 100 Club for diligent home reading.

- exceptional or urgent family circumstance (e.g. attending a funeral)

Following an absence from school you must ensure that within 7 days you provide your child's school with a verbal or written explanation for the absence. However, if the school has not received an explanation from you within 2 days, the school may contact you to discuss the absence. Please note even if an explanation has been provided, it may be declined if the absence is deemed not to be in best interests of your child within the DoE guidelines.

If you would like to discuss any aspect of attendance for your child, please contact the front Office with some details of your concerns and the most appropriate staff member will contact you to discuss your particular circumstances.

NSW Department of Education

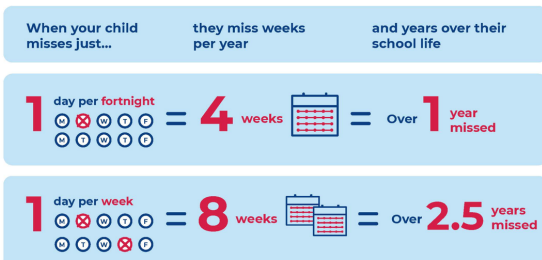
## Why attendance matters

When your child misses school they miss important opportunities to:

- Learn
- Make friends
- Build skills through fun

### Days missed = years lost

A day here and there doesn't seem like much, but...



education.nsw.gov.au



**TELL THEM FROM ME – 2021:** This term, our school is participating in the *Partners in Learning* parent survey, another part of the *Tell Them From Me* suite of surveys (student, teacher and parent surveys) on student engagement. The survey asks parents and carers questions about different factors that are known to impact on student wellbeing and engagement.

Running this survey will help our school understand parents' and carers' perspectives on their child's experience at school. These include: communication between parents/carers and staff, activities and practices at home and parent/carer views on the school's

support of learning and behaviour. This valuable feedback will help our school make practical improvements.

The survey is conducted entirely online on smartphones, iPads, tablets, laptops or computers. The survey will typically take 15 minutes or less to complete and is completely confidential. The parent survey is open now and participation in the survey is entirely voluntary, your responses are very much appreciated. More information about the survey is available at: [education.nsw.gov.au/tfm](http://education.nsw.gov.au/tfm).

To access the survey for our school go to: <http://nsw.tellthemfromme.com/m5gwd>

**REMINDER** for MPS parents and carers to download the NSW school updates app on your phone to ensure you receive the latest information about the operational status of our school: <https://education.nsw.gov.au/parents-and-carers/nsw-school-updates-app>

Mrs Sharyn Cox  
Principal

## 2. P&C ASSOCIATION

- **UNIFORM SHOP:** The uniform shop is kindly co-ordinated by volunteer co-ordinators, Mrs Amy Shone and Mrs Emma West. Online orders are currently on hold due to COVID restrictions.

## 3. COOL @ SCHOOL

# FAILURE is not the opposite of SUCCESS.

# It's **PART** of it.



Failure, making mistakes, is part of life. We need to make errors to improve and learn how to do things. Through failure you can reflect on what to change in order to make progress after you pick yourself up and try it again.

## 4. ICAS



### 2021

The NEW DATES for the completions that were supposed to be held during the stay at home orders are:

**ENGLISH** – Tuesday 5<sup>th</sup> October

**SCIENCE** – Monday 18<sup>th</sup> October

**SPELLING BEE** – Monday 18<sup>th</sup> October

**MATHEMATICS** – Monday 25<sup>th</sup> October

(Writing is still on Monday 11<sup>th</sup> October)

## 5. BOOKS IN HOMES – Kinder

The Term 4 catalogue is going home this week and families are asked to select their books and return the order form by Thursday, 14 October.

## 6. SCHOOL PHOTOGRAPHS

School photographs (all classes) will be taken during Week 7 on Tuesday, 16<sup>th</sup> and Wednesday 17<sup>th</sup> November. Please be aware there are some changes to our procedure and we will be starting on Tuesday with Year 3 through to Year 6 classes, followed by some special groups (requiring full summer uniform) and on Wednesday, we will take the K-2 class photos followed by the representative sporting teams. Sibling photo option is for Tuesday lunchtime ONLY. While there ordering are envelopes available, the preferred method of ordering is online:

- Visit [www.advancedlife.com.au](http://www.advancedlife.com.au) on any computer or mobile device
- Enter your 9 Digit community Code 6L8 LJ4 JA6
- Follow the ordering prompts
- Payment may be made using Mastercard, Visa, Paypal or LatitudePay
- Any queries contact: [www.advancedlife.com.au/contact](http://www.advancedlife.com.au/contact)

### Reminder ...

Please ensure your family contact details are current – there may be times when we need to make immediate contact. Please phone the school office to make any changes.

## 7. COMING EVENTS – Terms 4

Please check FaceBook and MPS Website for possible variations that may occur

Term 4			
1	Mon	4 Oct	
	Tues	5	Staff and Students resume; ICAS English (new date)
	Wed	6	OC test – new date (Yr 5 2022)
	Thurs	7	
	Fri	8	Assemblies: 10.30 KR-10; P&C Camel Art products – order and art due to office ICAS – Writing (new date)
2	Mon	11	
	Tues	12	
	Wed	13	
	Thurs	14	
	Fri	15	Assemblies: 10.30 KW-11 ; 2.15 5/6M-14 (Captains speak)
3	Mon	18	ICAS Science & spelling (new date)
	Tues	19	Class photographs New date: 16 & 17 November
	Wed	20	Team photographs
	Thurs	21	
	Fri	22	Assemblies: 10.30 KM-9; 2.15 3/4R-24 (Boy nominees speak)
4	Mon	25	ICAS Maths (new date)
	Tue	26	
	Wed	27	Yr 7 transition activity
	Thurs	28	
	Fri	29	Assemblies: 10.30 2H-40; 2.15 6L-15 (Girl nominees speak)
5	Mon	1 Nov	
	Tues	2	2022 K transition activity
	Wed	3	
	Thurs	4	
	Fri	5	
6	Mon	8	
	Tues	9	
	Wed	10	
	Thurs	11	
	Fri	12	
7	Mon	15	
	Tues	16	Class photos (new dates)
	Wed	17	Class, special groups, sporting teams
	Thurs	18	
	Fri	19	
8	Mon	22	
	Tues	23	
	Wed	24	
	Thurs	25	
	Fri	26	
9	Mon	29	
	Tues	30	
	Wed	1 Dec	
	Thurs	2	Annual presentation ceremony – details TBC
	Fri	3	
10	Mon	6	
	Tues	7	
	Wed	8	
	Thurs	9	
	Fri	10	
11	Mon	13	
	Tues	14	
	Wed	15	End of term for students
	Thurs	16	
	Fri	14	

*Amitie and Tannen arrive MOTIVATED ...*



# Visible Learning

Our *Visible Learning* journey continues at Moree Public School with the introduction of our first learning disposition this week ...



Dispositions, are the ways in which learners behave towards their learning.

Motivated students are often characterised by their enthusiasm and engagement in the classroom, their interest and involvement in a wide range of learning areas and their ability to actively cope with challenges and setbacks. They will often seek out additional learning experiences in order to learn as much as possible. Student motivation can be internally or externally driven but, most commonly, it is a combination of both which underpins students' approach to their learning.

Yesterday classes received a collection of 5 boxes. Each day, students will undertake activities that identify, support and engage them to become motivated about their learning. Activities include Colouring and Design Competitions to highlight motivation, reflection of student learning goals and activities that encourage strategies for managing distractions.



Stay tuned for more .....